



## Flat 7, Lons Court Bath Road, Bitton, BS30 6HX

**£395,000**

Nestled on Bath Road in the charming village of Bitton, this exquisite two-bedroom apartment is located on the second floor of the prestigious Lons Court Mansion, a former country estate dating back to 1864. Spanning an impressive 1,098 square feet, this residence offers a spacious and inviting atmosphere, perfect for modern living.

Upon entering, you will find a well-designed layout featuring two generous double bedrooms, ensuring ample space for relaxation and rest. The apartment boasts a separate utility room, a stylish bathroom, and a fitted open-plan kitchen/dining room, ideal for entertaining guests or enjoying family meals. The communal areas of Lons Court enhance the sense of community while providing a touch of elegance to your living experience.

Set at the end of a long private driveway, the property enjoys an elevated position that offers stunning views and a sense of tranquillity, making it feel like a serene country retreat. The surrounding open spaces provide a delightful backdrop, allowing you to unwind while observing the local wildlife.

Entrance via communal door into

### Hallway



Stairs rising to second floor, front door into

### Entrance Hall

Single radiator, doors to

### Kitchen/Dining Room

22'2" x 13'11" (6.77 x 4.26)



Sash windows to side and front aspects, a range of wall and floor units with worksurface over, under unit lighting, sink drainer unit with mixer taps over, single radiator, integrated oven and electric hob with extractor over, space and plumbing for washing machine, space for fridge freezer, breakfast bar area, open plan into dining area with fitted storage cupboards, double radiator, wood effect flooring.

### Sitting Room

17'0" x 14'9" (5.20 x 4.52)



Sash windows to front aspect enjoying views over the grounds, double radiator, wood effect flooring, double internal doors to

### Utility Area

7'7" x 7'3" (2.32 x 2.23)



Wash hand basin with taps over, close coupled w/c, space and plumbing for washing machine, space for tumble drier, wood effect flooring, storage cupboard with fitted shelving.

### Master Bedroom

13'11" x 12'2" (4.25 x 3.72)



Sash window to side aspect, fitted wardrobes, double radiator.

### Bedroom Two

15'11" x 10'2" (4.87 x 3.11)



Velux window to side aspect, single radiator.

## Bathroom

9'6" x 7'11" (2.92 x 2.42)

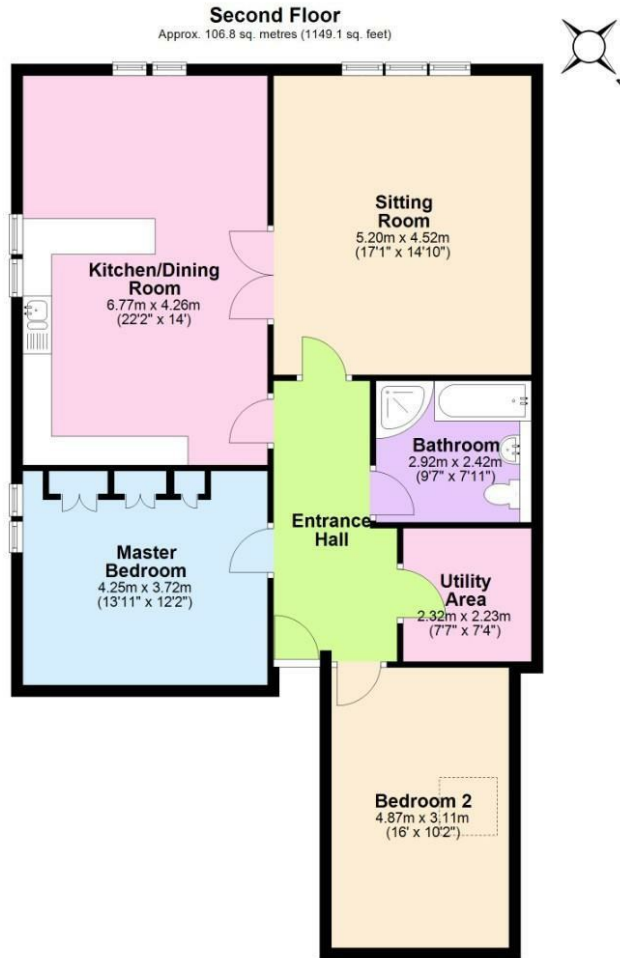


Suite comprising paneled bath, separate shower cubicle, wash hand basin with taps over, close coupled w/c, single radiator, spot lights, extractor fan.

## Directions

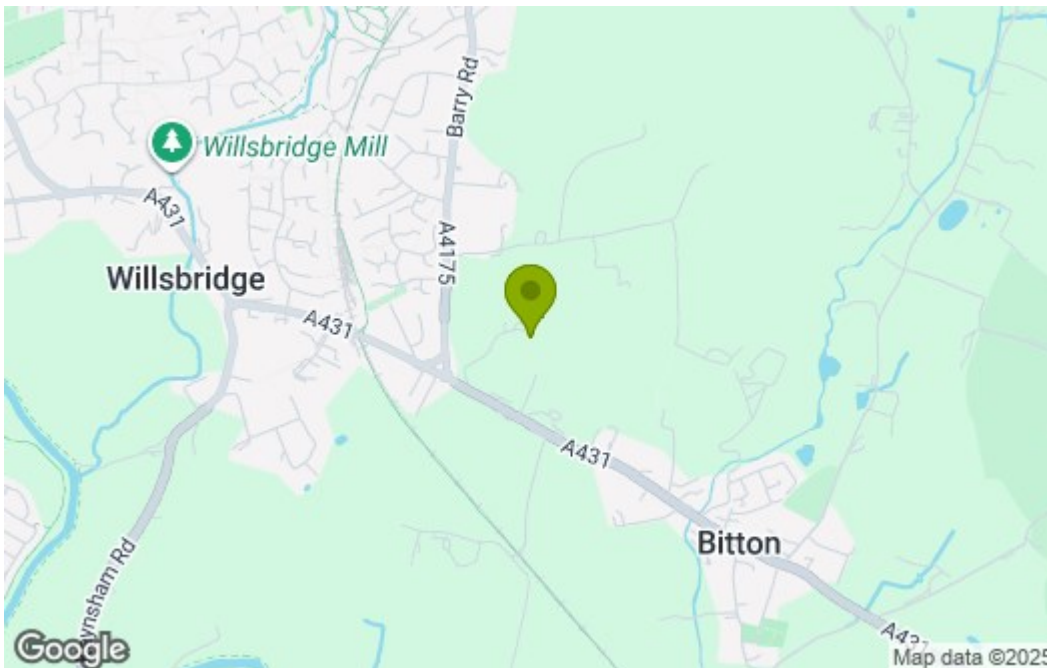
Sat Nav BS30 6HX

## Floor Plan

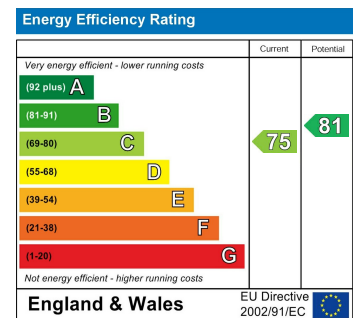


Total area: approx. 106.8 sq. metres (1149.1 sq. feet)  
**Flat 7 Lons Court, Britton**

## Area Map



## Energy Efficiency Graph



These particulars, whilst believed to be accurate are set out as a general outline only for guidance and do not constitute any part of an offer or contract. Intending purchasers should not rely on them as statements of representation of fact, but must satisfy themselves by inspection or otherwise as to their accuracy. No person in this firm's employment has the authority to make or give any representation or warranty in respect of the property.